

Headline Report for North Norfolk District Council - Dashboard View



Written by LGA Research from Local Government Association

Headline Report for North Norfolk District Council - Dashboard View

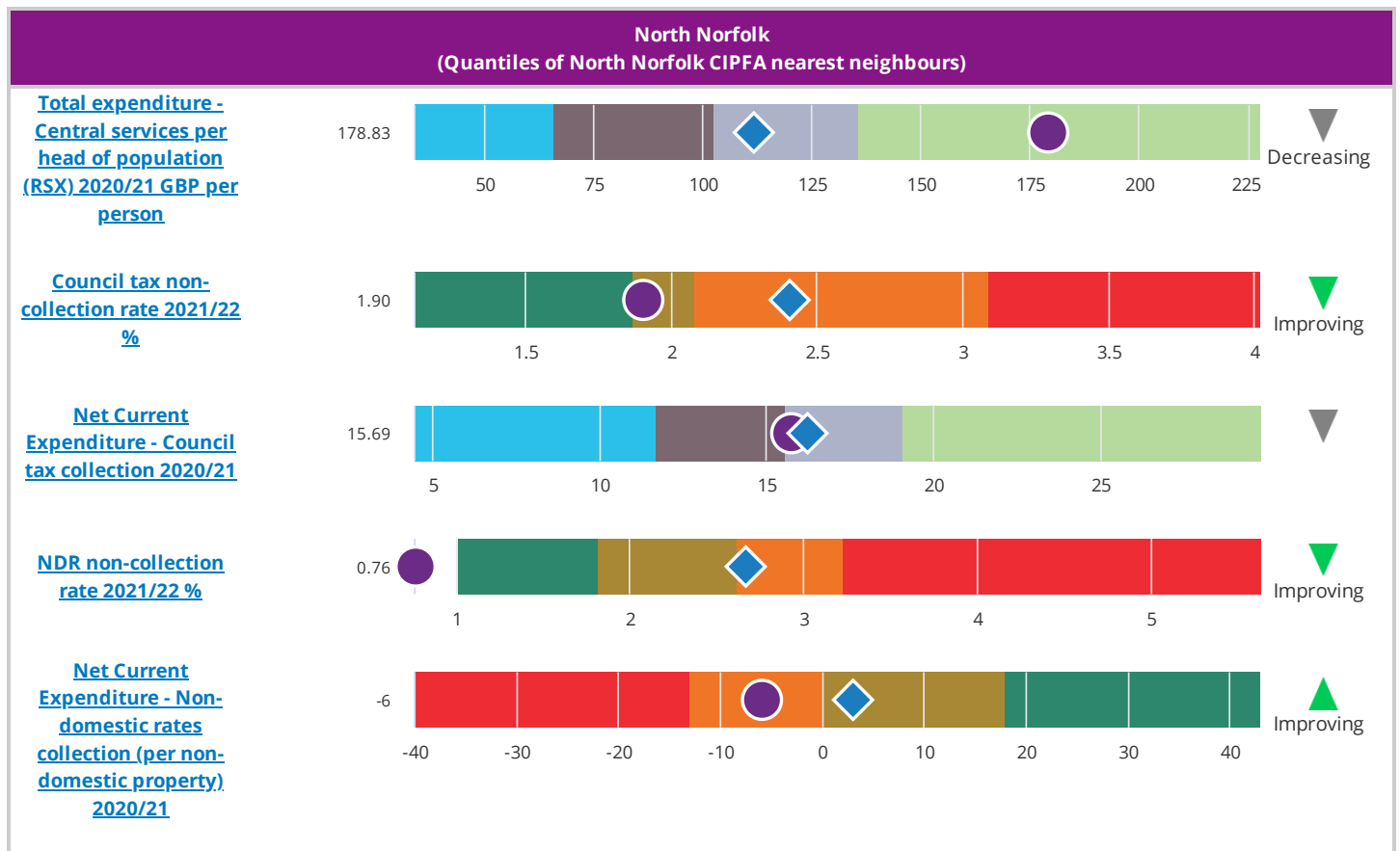
Below is a list of comparable value for money and performance data for services within the main funding streams for councils. Authorities may wish to change the metrics contained in this report or the comparator group to suit their own needs. The metrics are taken from various published national data collections; source information for each metric is listed under the detailed view. Authorities may wish to investigate the data sources further to locate other data in which they have a particular interest.

The metrics fall into the following broad funding areas: [Central Services](#), [Education, Children, Adult, Housing, Highways and Transport](#), [Planning and Development](#), [Environmental and Regulatory](#), [Cultural and Related](#) and [Public Health](#)

This report is presented in a series of dashboards, if you would like to view this report in a bar chart format please click this link: [Headline report\(Bar Charts\)](#).

All data are shown as they appear in the source publication; if your chosen authority doesn't feature in one of the charts this is because the value was either missing from the original publication or suppressed due to disclosure rules of the publication source.

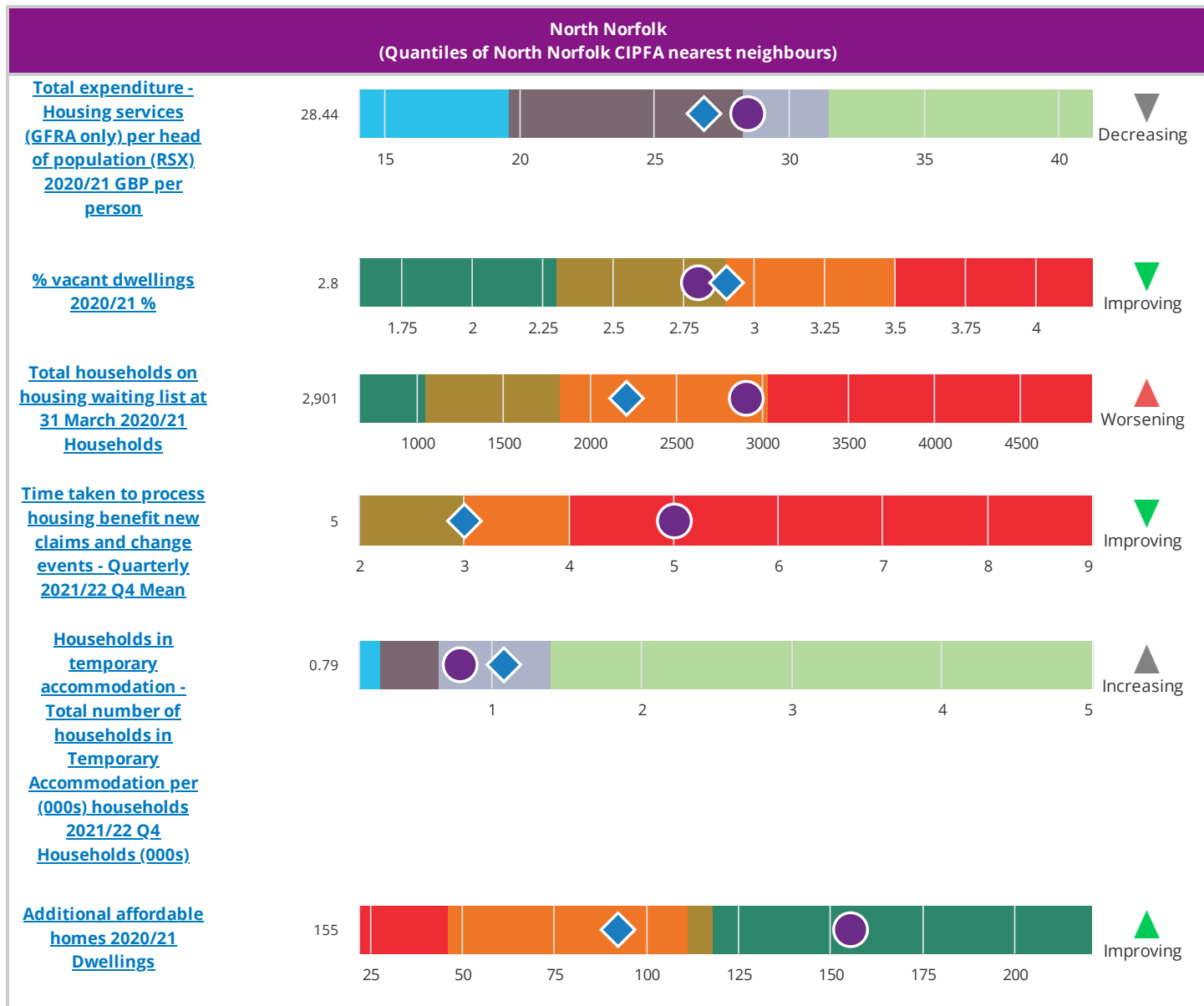
Central Services



● North Norfolk ■ Mean for North Norfolk CIPFA nearest neighbours

Indicators that have a polarity will show a direction of travel (D.O.T) label of: Improving, No change or Worsening

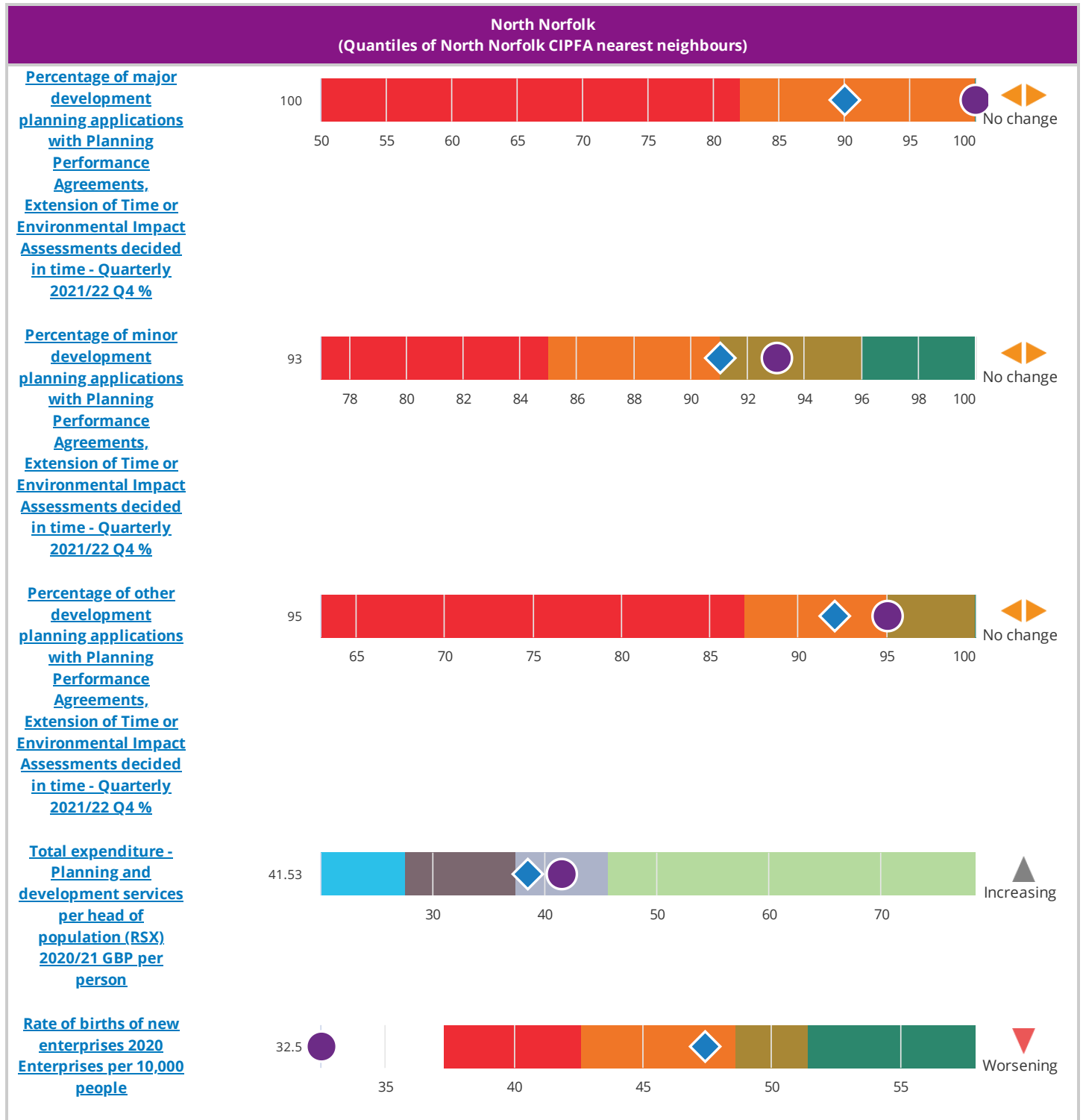
Indicators that have no polarity will show a direction of travel (D.O.T) label of: Increasing, No change or Decreasing



● North Norfolk
 ■ Mean for North Norfolk CIPFA nearest neighbours

Indicators that have a polarity will show a direction of travel (D.O.T) label of: Improving, No change or Worsening

Indicators that have no polarity will show a direction of travel (D.O.T) label of: Increasing, No change or Decreasing

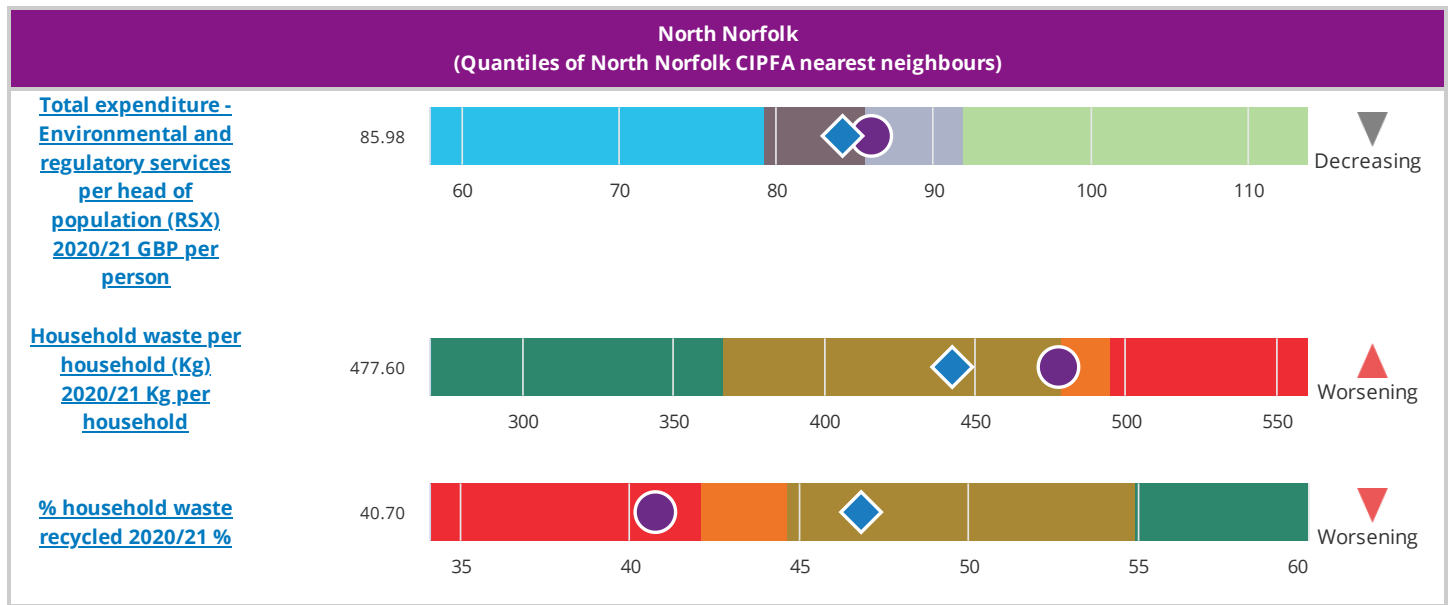


● North Norfolk ■ Mean for North Norfolk CIPFA nearest neighbours

Indicators that have a polarity will show a direction of travel (D.O.T) label of: Improving, No change or Worsening

Indicators that have no polarity will show a direction of travel (D.O.T) label of: Increasing, No change or Decreasing

Environmental and Regulatory Services

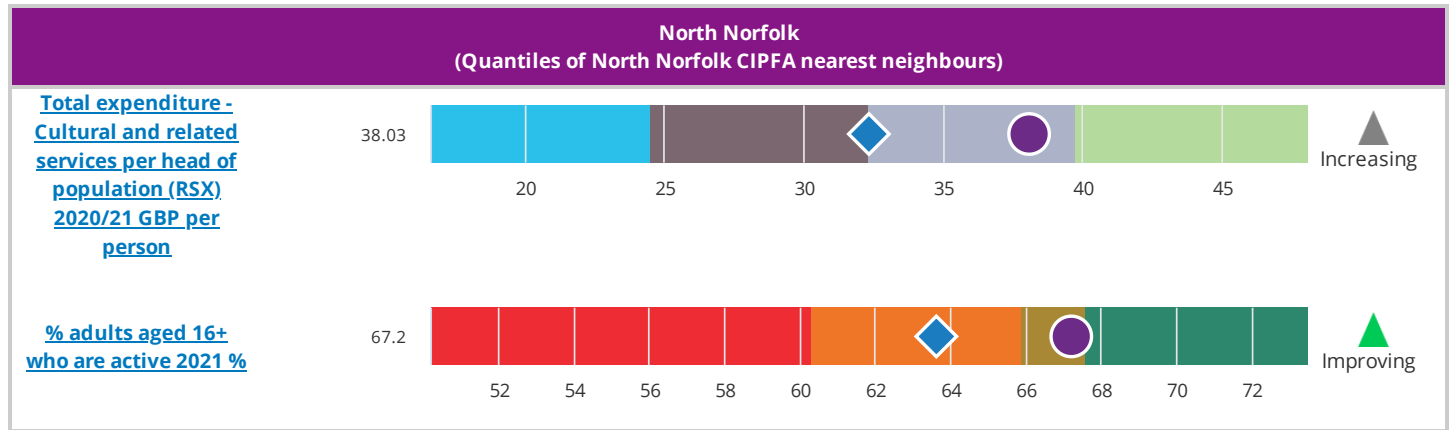


● North Norfolk
 ■ Mean for North Norfolk CIPFA nearest neighbours

Indicators that have a polarity will show a direction of travel (D.O.T) label of: Improving, No change or Worsening

Indicators that have no polarity will show a direction of travel (D.O.T) label of: Increasing, No change or Decreasing

Cultural and Related Services



● North Norfolk

■ Mean for North Norfolk CIPFA nearest neighbours

Indicators that have a polarity will show a direction of travel (D.O.T) label of: Improving, No change or Worsening

Indicators that have no polarity will show a direction of travel (D.O.T) label of: Increasing, No change or Decreasing

References

This report was generated using data from:

- [CIPFA Statistical Information Services - Public Library Statistic](#)
- [Calculated by LGI - Calculated metric types](#)
- [Department for Education - Characteristics of Children in Need in England](#)
- [Department for Education - Children Looked After by Local Authorities in England \(including adoption and care leavers\)](#)
- [Department for Education - GCSEs \(key stage 4\)](#)
- [Department for Education - NEET and participation](#)
- [Department for Education - Permanent and Fixed Period Exclusions from Schools in England](#)
- [Department for Environment, Food and Rural Affairs - Local authority collected waste management](#)
- [Department for Levelling Up, Housing & Communities - Council tax collection rates](#)
- [Department for Levelling Up, Housing & Communities - Development Control statistics](#)
- [Department for Levelling Up, Housing & Communities - Live tables 615 Vacant Dwellings by Local Authority District](#)
- [Department for Levelling Up, Housing & Communities - Live tables on affordable housing supply](#)
- [Department for Levelling Up, Housing & Communities - Local Authority Housing Statistics \(LAHS\)](#)
- [Department for Levelling Up, Housing & Communities - Revenue Outturn \(RSX\)](#)
- [Department for Levelling Up, Housing & Communities - Statutory homelessness live tables](#)
- [Department for Transport - Journey time statistics](#)
- [Department for Transport - Road conditions statistics](#)
- [Department for Work and Pensions - Housing Benefit: statistics on speed of processing \(SoP\)](#)
- [NHS Digital - Measures from the Adult Social Care Outcomes Framework, England](#)
- [NHS Digital - National Child Measurement Programme: England](#)
- [NHS England - Monthly situation Report on Acute and Non-Acute Delayed Transfers of Care by Local Authority](#)
- [Nomis - Annual Population Survey](#)
- [Office for Health Improvement and Disparities \(OHID\) - Local Alcohol Profiles for England](#)
- [Office for Health Improvement and Disparities \(OHID\) - Local Tobacco Control Profiles](#)
- [Office for Health Improvement and Disparities \(OHID\) - NHS Health Check](#)
- [Office for Health Improvement and Disparities \(OHID\) - Public Health Outcomes Framework](#)
- [Office for National Statistics - Business Demography](#)
- [Office for National Statistics - Conception Statistics, England and Wales](#)
- [Sport England - Active Lives Survey](#)